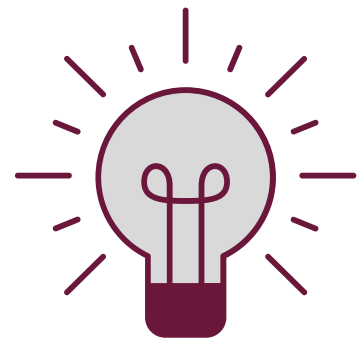


# FUNERAL PROCESSION INSTRUCTIONS



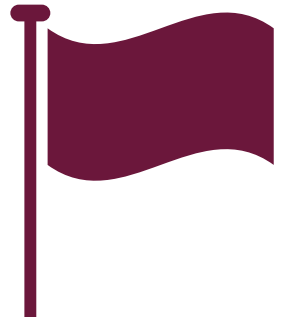
## HEADLIGHTS

The headlights of your vehicle must be on at all times\* while traveling in the funeral procession.

## PENNANT

An orange & white funeral pennant must be attached to your vehicle if you are part of the funeral procession.\*

The funeral home staff will remove the pennant when we arrive at cemetery.



## DRIVING

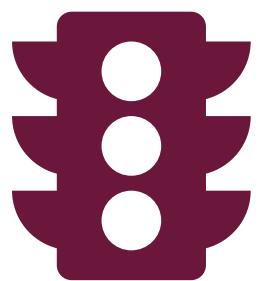


When driving in the funeral procession, follow the vehicle immediately in front of you. Do not allow a large gap to develop between you and the vehicle in front of you.\*\*

## INTERSECTIONS

The lead vehicle will stop at intersections for red lights and stop signs. Once the lead vehicle proceeds, the funeral procession has the right-of-way and should not stop.

Nevertheless, please exercise caution.



\*Ohio Revised Code 4511.451

\*\*Dobrozsi v. Henson, 162 NE 2nd 2239 (1959)